

OAKLAND CUSD #5

**ANATOMY**  
**APRIL 13-17, 2020**

DEBRA WELCH

# Week of April 13-17, 2020

## High School Science

### Debra Welch

Hello students! I hope all of you are staying healthy. I just want everyone to know that I am thinking you and miss having school as normal. Remember to keep your immune systems strong! Basic directions are: You need to complete one lesson a week for only the class you were currently enrolled in and choose from the 3 choices. Choices 1 & 2 are for review of material we have already covered this year. I will start at the beginning and go through the year's material. Choice #3 will always be new work using your textbook or other handouts I include. I will make every effort to keep your work simple to do, considering that we are not learning together in the classroom. Your work should be turned in as a hard (paper) copy to the office or through email in a word or google document. My email is: [debra.welch@oakland5.org](mailto:debra.welch@oakland5.org). Please be sure all work has your name! If you have not turned in the assignment by the following Monday, I will need to email your parents and/or place a phone call home. Please be diligent to turn work in on time. I suggest you set up a schedule just as if you were at school and allow for the normal time period. Most assignments I send you will take less time than our normal 40 minutes. Comments will be made on paper copies and returned to you. If you send in homework answers as an email I will reply to your email and give my comments/reflections of your work. I will be supplying you with the necessary notes or you will need to use your book to find the answers. If you have any questions feel free to email me and I will get back to you by email during my office hours. If you can't email feel free to call the office and leave me a message. Good Luck and stay healthy!

Anatomy: for those of you who wanted to continue learning throughout the body systems I will be including notes and sending you powerpoints to use with Choice #3. If you plan to go into a medical field I advise you to go ahead and complete the Enrichment on the body systems we could not study due to school closure.

Lesson Choices on next page:

Class	Choice 1	Choice 2	Choice 3 (Enrichment)
Biology	'Fill out Plant Taxonomy form using wordlist.	Write a Brief review of how the Plant Taxonomy Chart is organized. (see Choice 1 & notes)	READ the powerpoint notes on Viruses & do the SG 18-2 p15-16 *in addition to hardcopy I will email a copy. Save this ppt notes for future work.
* Anatomy	Take the Eye quiz and label all the structures.	Review how light travels into the eye and <u>include all appropriate structures</u> as light passes to the back of eye and the optic nerve. <i>Label the structures that light travels through</i>	List <u>step-by-step</u> how sound waves enter and travel through the ear. Include a brief discussion for EACH step. (there should be Several). Use the powerpoint I sent you in your emails.
		<i>the eye from the cornea to the optic nerve and submit.</i>	

Name \_\_\_\_\_ Date 4/13-17 4a 1B

**Quiz: Eye**

*Matching- choose from the wordlist and match the correct term.*

- \_\_\_\_\_ 1. outer coat that comprises the white of the eye.
- \_\_\_\_\_ 2. Intrinsic muscle.
- \_\_\_\_\_ 3. responsible for production of tears.
- \_\_\_\_\_ 4. Has no pigment, the iris is pink.
- \_\_\_\_\_ 5. the middle layer of eye which has blood vessels in the anterior portion.
- \_\_\_\_\_ 6. lobe of cerebrum that is responsible for sight.
- \_\_\_\_\_ 7. myopia is:
- \_\_\_\_\_ 8. Structure where optic nerve exits eye, has neither rods or cones.
- \_\_\_\_\_ 9. Which structure in the retina enables you to see color?
- \_\_\_\_\_ 10. Farsightedness, you can't see things far away.
- \_\_\_\_\_ 11. Conjunctivitis is also known as:

**Matching-Part 1:**

- a. albino
- b. cone
- c. sclera
- d. hyperopia
- e. choroids
- f. occipital
- g. optic disc
- h. pink eye
- i. muscle inside eye
- j. lacrimal apparatus
- k. near-sighted

Part II: Eye Diagram-

Wordlist:

- a. iris
- b. sclera
- c. pupil
- d. anterior chamber
- e. vitreous chamber
- f. ciliary body
- g. optic nerve
- h. choroid
- i. suspensory ligament
- j. cornea
- k. retina
- l. lens

\_\_\_ 1.

\_\_\_ 2.

\_\_\_ 3.

\_\_\_ 4.

\_\_\_ 5.

\_\_\_ 6.

\_\_\_ 7.

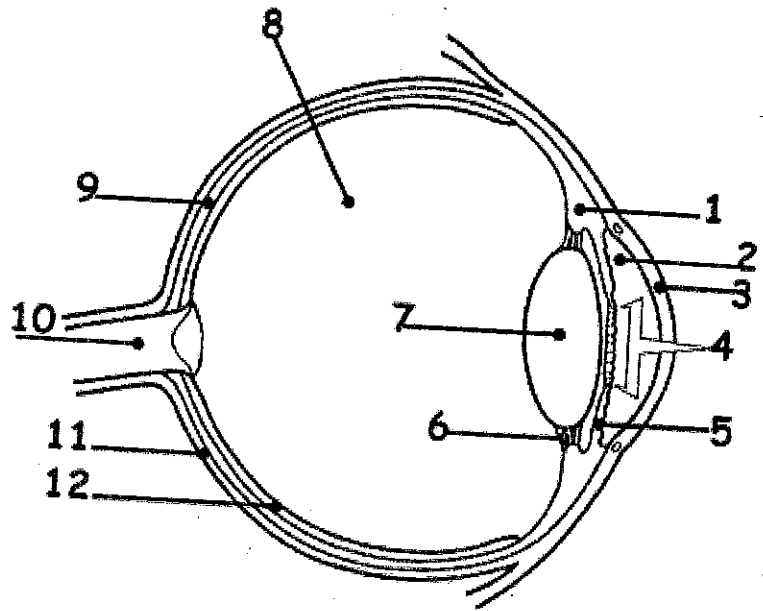
\_\_\_ 8.

\_\_\_ 9.

\_\_\_ 10.

\_\_\_ 11.

\_\_\_ 12.



13. List and describe 2 diseases/conditions of the eye.